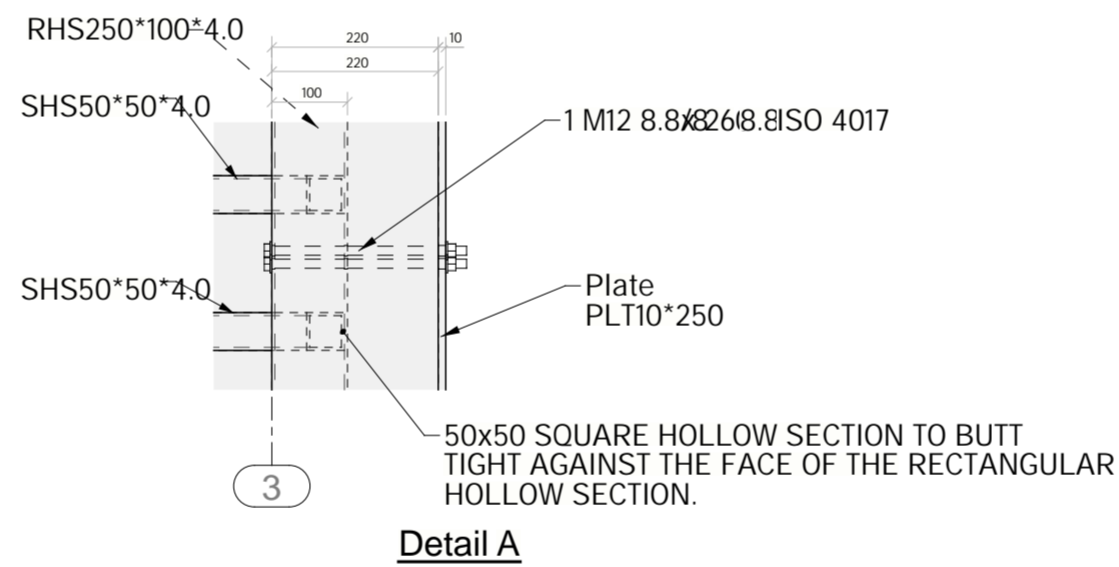
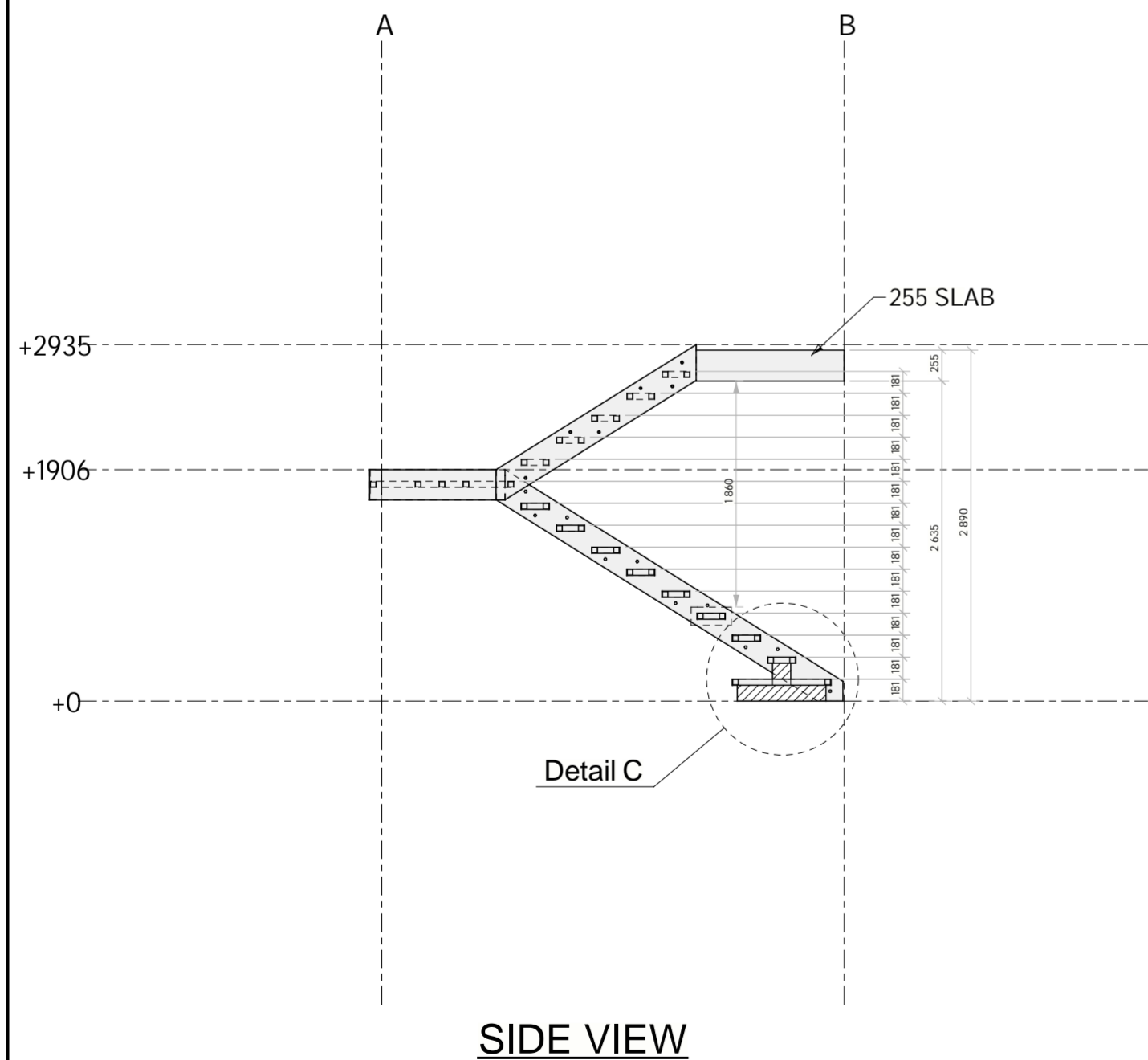
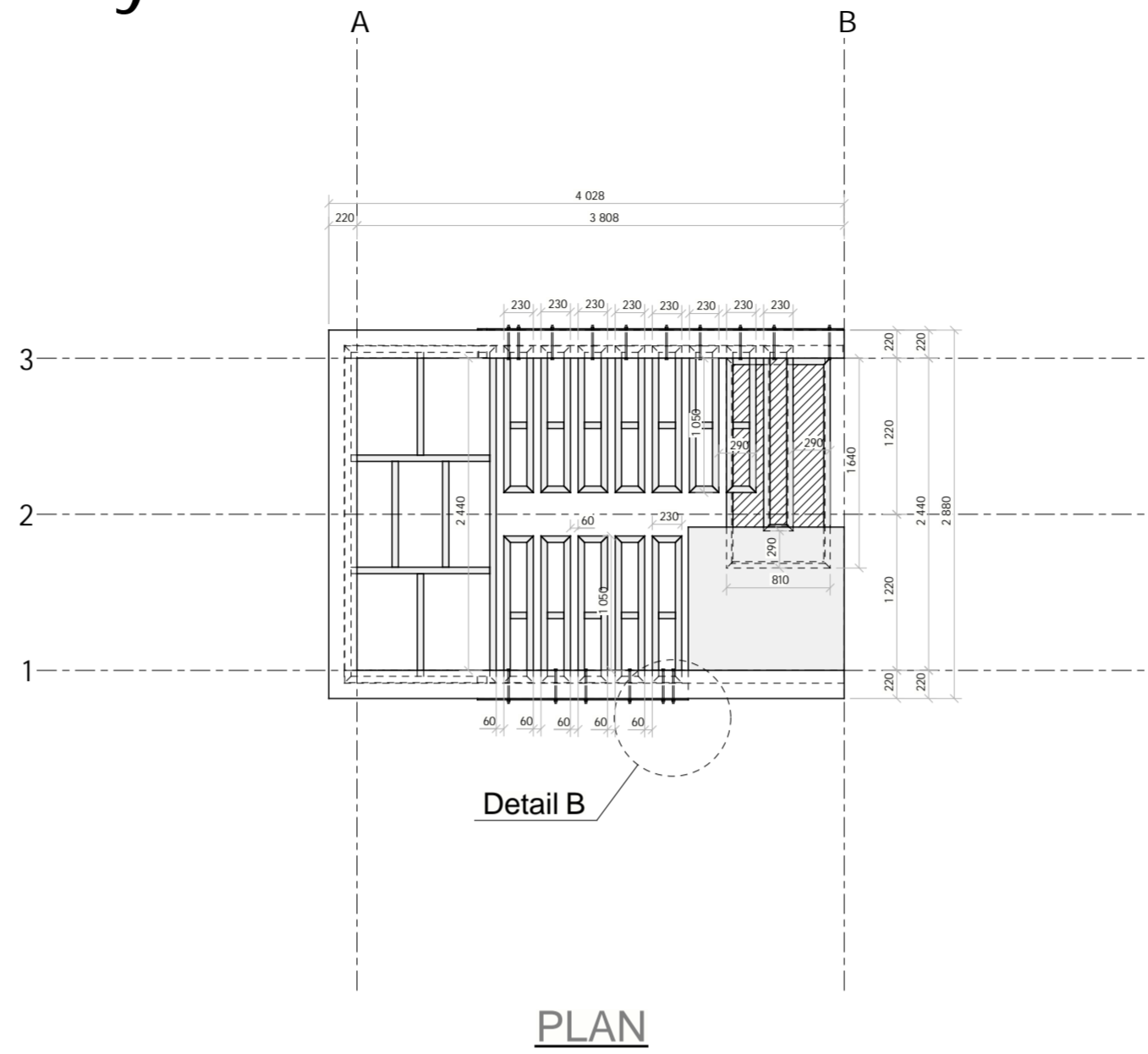
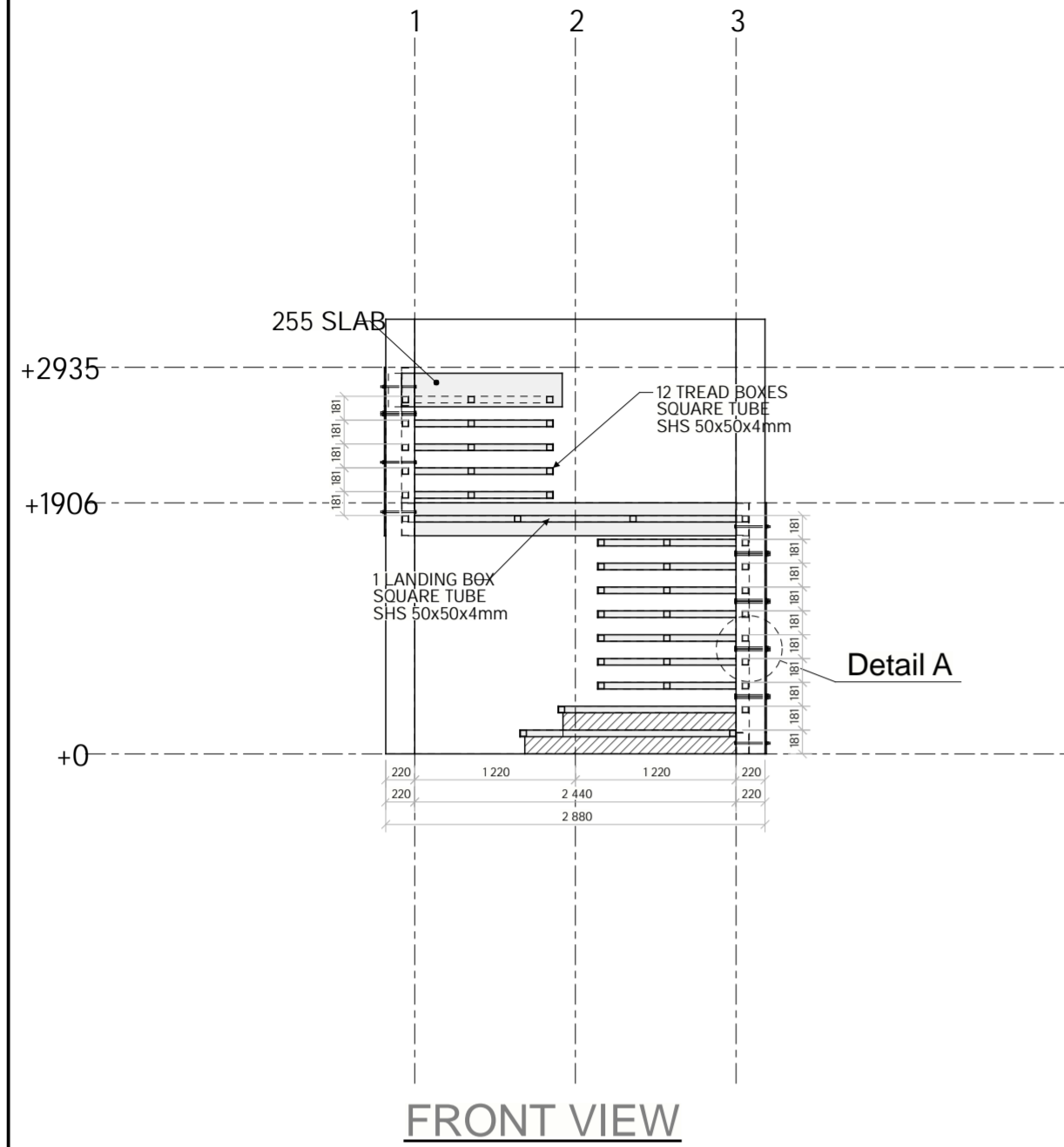
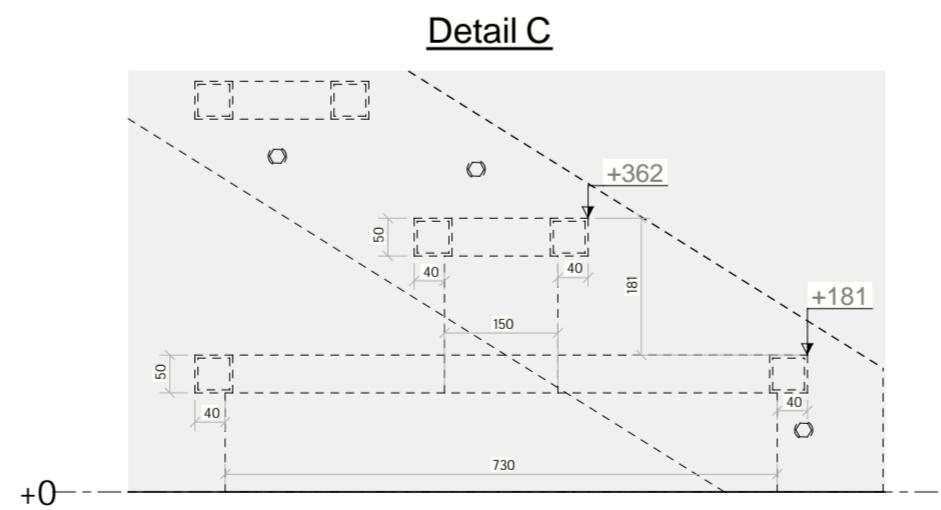
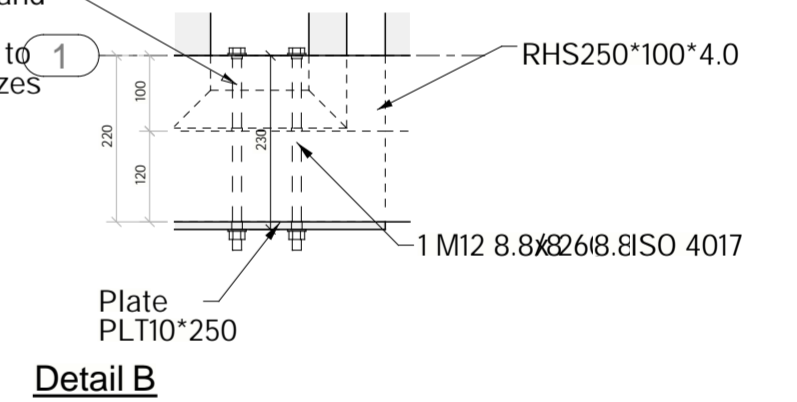


Preliminary Plan



M12 Grade 8.8 through bolt with plate washer and nut to far side. Contractor to drill 14mm diameter hole through brick/masonry wall on site. hole to be clean and square to wall face. Bolt length to be confirmed by structural engineer prior to installation. All bolt, washer and nut sizes to comply with SANS 1700.



- All dimensions are in millimetres unless otherwise stated.
- Do not scale from these drawings. Written dimensions take precedence.
- All steelwork to be fabricated in accordance with SANS 2001-CS1.
- All bolts to comply with SANS 1700. Grade 8.8 unless otherwise noted.
- All welds to be continuous fillet welds unless otherwise noted. Weld size to structural engineer's specification.
- All steelwork to be hot-dip galvanised or painted to engineer's specification prior to erection.
- Contractor to verify all dimensions on site prior to fabrication.
- Any discrepancies or conflicts on these drawings to be reported to the structural engineer immediately. Do not proceed without written instruction.
- These drawings are not to be used for construction until reviewed and approved by the appointed structural engineer.
- Drawing status: FOR REVIEW – NOT FOR CONSTRUCTION** until engineer's approval stamp is applied.

Rev | Revision Description | Date

Geran
Wing Staircase
Steel Staircase With Intermediate landing and RHS stringer***

Drawing title
A1 General Arrangement Drawing

Drawn S.Vuma
Scale 1:50 1:10

Issued
Revised

Project Number
WS-008

Drawing G | 21 | Rev 0